

ISOBRACE OSB

1 | Product Name

ISOBRACE OSB

2 | Manufacturer

ISOBRACE OSB is manufactured by Isofoam Group, a premier manufacturer of insulation products for over 40 years.

Isofoam Group

1346, boul. Vachon Nord
 Sainte-Marie (Québec) G6E 1N4
 T: 418 387-3641 | F: 418 387-4039
 info@isofoam.com

3 | Product Description

ISOBRACE OSB is a composite panel consisting of expanded polystyrene insulation laminated to a perforated 7/16" Oriented Strand Board (OSB). The OSB panel is perforated at regular intervals.

4 | Dimensions

Dimensions	Thicknesses	R Value (RSI)
48" x 108" Butt edge	1 5/16"	4.15 (0.73)
	1 9/16"	5.15 (0.91)
	1 13/16"	6.18 (1.08)
	2 3/16"	7.65 (1.35)

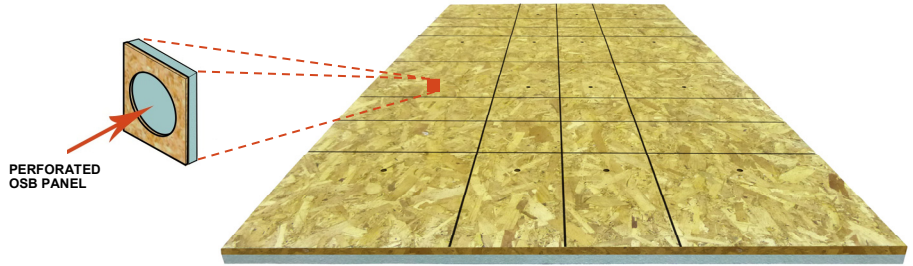
Also available : 48" x 96", other thicknesses.

Contact us for more information.

5 | Applications

Above grade wall insulation

- Ideal for new and retrofit constructions.
- Residential and light commercial purposes.
- Can be installed on various types of building structures.



6 | Advantages & Benefits

Structural rigidity

- Contribute to the structural strength of the building's walls.
- Can eliminate the need to add temporary bracing.
- Provides support for exterior cladding fixation, according to the manufacturer's recommendations.

Superior insulation

- Provides continuous insulation.
- Eliminates the thermal bridge between the structure and the exterior cladding.
- Meets the highest insulation requirements.
- Stable and permanent insulating value.

Water vapour permeability

- Perforated OSB panel at regular intervals to increase water vapour permeability.

Fast and easy to install

- 2 installation in 1. Save time and money.
- Product resistant to handling breakage.
- Requires the same tools already used on construction site.

7 | Environmental Data

Containing 98% air and only 2% of plastic, **ISOBRACE OSB** foam component presents lower risks of toxicity than those from conventional building materials and, does not and has never contained HCFCs or HFCs that damage the ozone layer.

The Oriented Strand Boards (OSB) used in the composition of **ISOBRACE OSB** are FSC (*Forest Stewardship Council*) or SFI (*Sustainable Forestry Initiative*) certified.

Isofoam Group products contribute to obtaining LEED® credits. For complete details of the potential contributions of the product for a LEED® Canada-NC-CS 2009 or a LEED® Canada for Homes 2009 project, contact us or fill out the form on our website.

8 | Installation

Panel orientation

- To ensure the structural rigidity of the product, nails must be firmly supported on the Oriented Strand Board. It is recommended to install the OSB side to the exterior and the EPS side on the frame. With a special fastening tool, it is possible to install the panel with OSB against the frame. In that case, refer to the installation guide.
 - In areas requiring resistance to seismic forces, installer must verify and confirm the applicable bracing requirements.
- Good building practices recommend leaving a 1/8" gap between OSB panels.
- Using 48" x 108" panels allows insulation of joists and headers.

Cutting the panel

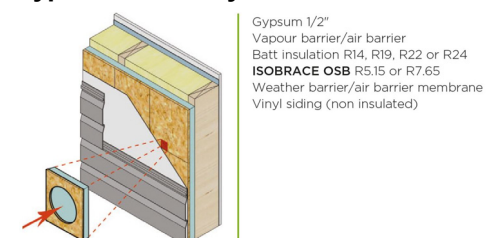
- With a regular saw.

Nailing

- Ordinary, twisted or ring nails shall be used.
- Suggested length of nails:
 - Min. 2 1/2" for an R4.15 panel.
 - Min. 3" for an R5.15 panel.
 - Min. 3 1/2" for an R7.65 panel.
- Recommended spacing between nails:
 - Not more than 6" o/c along edge supports.
 - Not more than 12" o/c along intermediate supports.

For more details, refer to installation guide.

Typical Assembly



Other assemblies possible. Illustration for information purposes only.

9 | Warranty

ISOBRACE OSB meets the standards and requirements of:

EPS Insulation: CAN/ULC-S701, Type 2
CCMC # 12895-L

OSB: CSA-0325 – W24, Exposure 1
DOC PS-2

10 | Technical Data

Table 2. Physical Properties of **ISOBRACE OSB**

PROPERTIES	METHODS	UNITS	RESULTS
ISOBRACE OSB (laminated product)			
THERMAL RESISTANCE	ASTM C-518	m ² ·°C/W/25 mm (h·re·ft ² ·°F/Btu/in)	See dimensions table
ISOBRACE OSB NVB WATER VAPOUR TRANSMISSION	ASTM E-96	ng/Pa·s·m ² (perms)	>60* (>1)*

*Property limited to **ISOBRACE OSB NVB** products where final laminated product water vapour permeability had been confirmed.

PROPERTIES	METHODS	UNITS	RESULTS
EXPANDED POLYSTYRENE FOAM (EPS)			
COMPRESSIVE STRENGTH MIN.	ASTM D-1621	psi (kPa)	16 (110)
FLEXURAL STRENGTH MIN.	ASTM C-203	psi (kPa)	35 (240)
WATER VAPOUR TRANSMISSION MAX.	ASTM E-96	ng/Pa·s·m ² (perms)	200 (3.5)
WATER ABSORPTION MAX.	ASTM D-2842	%	4
DIMENSIONAL STABILITY	ASTM D-2126	%	0.5
FLAME SPREAD	CAN/ULC S102.2M	-	240
SMOKE DEVELOPED	CAN/ULC S102.2M	-	415
ORIENTED STRAND BOARD (OSB)			
Construction Sheathing	CSA-0325 – W24, Exposure 1 DOC PS-2		

The Safety Data Sheet of Isofoam Group products is available on the website.

NOTE | Due to the wood product supply situation, water vapour permeability validation of the laminated product may not be available.

However, following Article 9.25.5.1. 3) of provincial and national Building Codes, OSB under 12.7mm (7/16") conforming to CSA-O325 can be used in assemblies without consideration to its water vapour permeability.

Please request the **NVB** specified products if the water vapour permeability over 60ng is required.

Otherwise, product will be supplied according to its availability.

11 | Maintenance

No maintenance is required after **ISOBRACE OSB** panels are properly installed.

12 | Technical Services

Our experts will be pleased to answer your questions regarding application and installation of our products.

13 | Availability & Cost

Availability: Throughout eastern Canada.

Cost: Current price list available on request.

14 | Limitations

Combustible if exposed to an open flame or other substantial and sustained source of ignition. Avoid contact with petroleum-based solvents or their vapours. Avoid prolonged exposure to direct sunlight.

Storage specifications

- This product has to be treated in the same manner as common OSB panels.
- When possible, indoor storage is recommended.
- If stored outdoors, cover the panels with a plastic sheeting (tarp) to protect them from bad weather and ultraviolet rays. Cover must allow air circulation.
- Store and handle panels flat. Use at least three (3) supports on the 8-foot length, one at center and the others at approximately 16" (40 cm) from ends to reduce the risks of deformation. Product must be stored at least 4" (10 cm) from the ground.

Isofoam Group

1346, boul. Vachon Nord, Sainte-Marie (Québec) G6E 1N4
T: 418 387-3641 – 1 800 463-8886 | F: 418 387-4039
info@isofoam.com | www.isofoam.com

N.B.: The information and data contained in the present document are offered in good faith based on information we believe to be reliable. This document contains no representations or warranties expressed or implied as to the information data or suggestions, or as to the absence or infringement of any patent or rights of third parties. Reference is made to the terms and conditions under which above mentioned products are sold. All suggestions must be adapted as to their application and consequently modified, if necessary, to conform to local conditions and materials use.