

MEET THE OBC 2017

RIGID INSULATION

RESIDENTIAL • COMMERCIAL • INDUSTRIAL • INSTITUTIONAL



MEET THE OBC 2017

INSULATION REQUIREMENTS

With Isofoam Group solutions

WHAT'S NEW?

- Compliance packages (effective January 1st, 2017, see Get Started).
- Introduction of the requirement of continuous insulation to eliminate thermal bridging. ➔
- New airtightness option. ➔

Thermal bridge: Regulations require that building components creating a thermal bridge are covered with an insulating material. The insulating material must cover the thermal bridge from the exterior, the interior or a combination of both.

Meeting the performance targets can reduce the insulation requirements in a chosen compliance package.

GET STARTED

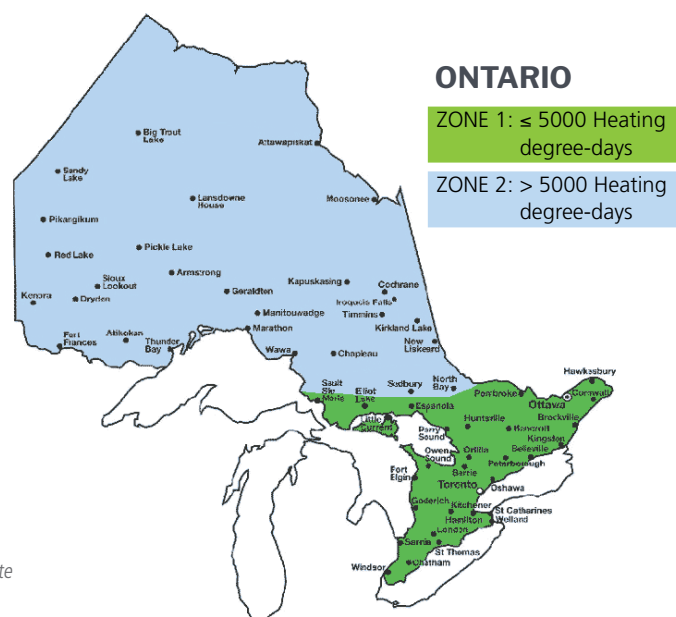
Identify whether the construction will be in zone 1 or 2.

Choose your compliance package*.

The compliance packages are classified in 3 tables which are divided by the furnace efficiency or whether the home is electrically heated:

- **Table A** → AFUE \geq 92% efficient (incl. solid fuel and earth energy systems)
- **Table B** → $84\% \leq$ AFUE < 92% efficient (mid-efficient oil furnaces and boilers)
- **Table C** → Electrically heated homes

* For compliance packages and airtightness targets details, refer to the OBC 2017 or visit our website



WHY CHOOSE ISOLOFOAM?

High quality product

- Designed and manufactured in Canada.
- Tested and proven.
- Developed to meet the needs of professionals.
- New construction or renovation.
- Lightweight and easy to install.
- Meet Building Code standards and the highest insulation requirements.



Environmentally friendly

- Free of ozone-depleting HFCs.
- Contains recycled materials.
- 100% recyclable and reusable.
- **Greenguard** and **Greenguard Gold** certified products.



Perfect for sustainable construction

- Contributes to LEED credits.
- Meets the requirements of high energy efficiency construction programs such as:
 - Energy Star | Passive House

CHOOSE THE PERFECT SOLUTION FOR YOUR NEEDS & PREFERENCES

ABOVE GROUND WALL INSULATION

ISOCLAD®

EXTERIOR
AIR BARRIER/NON VAPOUR BARRIER INSULATION
PANEL WITH A LAMINATED MEMBRANE

Non vapour barrier material. No need to calculate the dew point.

Creates a continuous insulating air barrier/weather barrier envelope.
Help reaching airtightness targets. No other membrane needed.
Easy-to-seal.

4' x 8' or 4' x 9'

Shiplapped 4 sides for better air and water tightness.

1 1/4" (R5.05) | 1 1/2" (R6.05)
2" (R8.1) | 2 1/2" (R10.1)

Also available: 48" x 120", other thicknesses.
CCMC #12981-R: Air barrier material



ISOLOFOAM HD 160 XHD 200 | 300

EXTERIOR OR INTERIOR
HIGH DENSITY VERSATILE INSULATION PANEL

Non vapour barrier material. No need to calculate the dew point.

Weather barrier; no membrane required.

Use your preferred air barrier membrane to help you reach airtightness targets.

2' x 8' or 4' x 8'

Shiplapped 4 sides, reduces risk of water infiltration.

HD 160: 1 1/4" (R5.05) | 1 7/8" (R7.55) | 2 1/2" (R10.1)
XHD 200: 1.2" (R5) | 1.8" (R7.55) | 2.4" (R10)
XHD 300: 1.2" (R5.1) | 1.8" (R7.65) | 2.4" (R10)

Also available: other thicknesses, dimensions, and densities.
CCMC #12895-L: Type 2
CCMC #13638-L: Type 3



ISOBRACE OSB®

EXTERIOR
EXPANDED POLYSTYRENE INSULATION PANEL
LAMINATED TO A 7/16" ORIENTED STRAND BOARD (OSB)

Perforated OSB panel to maximize the water vapour permeability.

Allow to use your preferred weather barrier membrane.

Use your preferred air barrier membrane to help you reach airtightness targets.

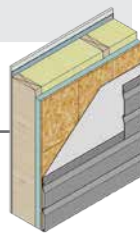
OSB + EPS : 2 steps in 1 installation.

4' x 8' or 4' x 9'

Butt edge.

1 9/16" (R5.15)
3/16" (R7.65)

Also available: other thicknesses.
CCMC #12895-L: Type 2



ISOSHIELD NVB premium

EXTERIOR
INSULATION PANEL MADE OF GRAPHITE ENHANCED POLYSTYRENE
LAMINATED WITH A REFLECTIVE AND A GREY FILMS

Non vapour barrier. Perforated films ensure water vapour permeance of the panel to reduce the risk of trapped moisture.

Can be used as weather barrier.

Can act as a second plane of protection when the joints are taped and sealed (OBC 9.27.3).

Cost competitive sheathing insulation panel, easy to install and seal.

48" x 96"

Butt edge.

1 1/16" (R5)
1 5/8" (R7.64)
2 1/8" (R10)

Standard product: 10 psi (70 kPa).
Also available: 48" x 108" or 48" x 120", non-perforated films, other thicknesses.



BASEMENT WALL & SLAB INSULATION

ISOFOIL®

INTERIOR BASEMENT WALL
INSULATION PANEL WITH A LAMINATED REFLECTIVE
VAPOUR BARRIER MEMBRANE

Ensures a continuous insulation and eliminates thermal bridges in the basement.

Reflective membrane for better comfort. Rigid easy-to-seal vapour barrier.

4' x 8' or 4' x 8' 3" (Height of 100" for better efficiency on job site, optimally covers the wall.)

Shiplapped 2 sides.

3" (R15.5*) Ideal solution if airtightness achieved, possible substitution of the basement wall insulation to R15ci (continuous insulation).

*See the CCMC report for more details about the different wall assemblies certified and recognized by the Ministry of Municipal Affairs and Housing of Ontario.

Also available: other thicknesses.
CCMC #13459-R: Effective thermal resistance of assemblies.



ISOLOFOAM HD 160 XHD 200 | 300

**EXTERIOR OR INTERIOR
SLAB | FOUNDATION**
HIGH DENSITY VERSATILE INSULATION PANEL

Economical and efficient solution.

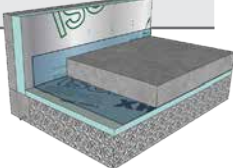
Non vapour barrier material.

2' x 8' or 4' x 8'

Shiplapped 2 or 4 sides.

HD 160: 1 1/4" (R5.05) | 1 7/8" (R7.55) | 2" (R8.1)
2 1/2" (R10.1) | 3" (R12.1) | 3 3/4" (R15.1)
XHD 200: 1.2" (R5) | 1.8" (R7.55) | 2" (R8.4)
2.4" (R10) | 2.9" (R12) | 3.6" (R15.1*)
XHD 300: 1.2" (R5.1) | 1.8" (R7.65) | 2" (R8.5)
2.4" (R10) | 2.8" (R12) | 3.5" (R15*)

Also available: other thicknesses, dimensions, and densities.
CCMC #12895-L: Type 2
CCMC #13638-L: Type 3



IFLEXFOAM®

UNDER SLAB
INSULATION PANEL WITH A LAMINATED MEMBRANE ON
EACH SIDE

Innovative insulation panel.

Less breakage on the job site. Resistant and flexible. Time saving.

4' x 8'

ISOCLICK clipping system on 4 sides.
Once installed, panels are clipped together and remain in place during installation.

160: 1 1/4" (R5.05) | 1 7/8" (R7.55) | 2 1/2" (R10.1)
200: 1.2" (R5) | 1.8" (R7.55) | 2.4" (R10)
300: 1.2" (R5.1) | 1.8" (R7.65) | 2.4" (R10)

Patented product.

CCMC #12895-L: Type 2
CCMC #13638-L: Type 3



ISORAD V2®

UNDER SLAB
RADIANT FLOOR HEATING INSULATION

Overall savings of more than 20% with **ISORAD V2** compared to a traditional installation.

Multidirectional tube retaining design for 1/2" and 5/8" tubes.

Eliminates the need of wire mesh if not required for slab reinforcement.

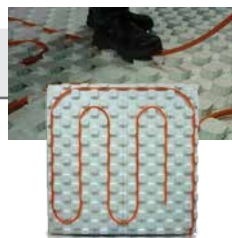
4' x 4'

ISOCLICK ALIGN clipping system on 4 sides.
Once installed, panels are aligned and clipped together. Remain in place during installation.

160: 2 1/2" (R10.1) | 3 3/4" (R15.1)
250: 2 1/2" (R10.5) | 3 3/4" (R15.7)

Also available in R3 version for renovation or upper storey floor.
Registered industrial design.

CCMC #12895-L: Type 2
CCMC #13638-L: Type 3



Meeting the airtightness performance targets can reduce the insulation requirements in a chosen compliance package.

OBC 2017

Insulation requirements & combinations according to the compliance packages*

ABOVE GROUND WALL INSULATION

Cavity insulation	Continuous insulation
R19	+ R5
R22	

Cavity insulation	Continuous insulation
R14	+ R7.5
R22	

Cavity insulation	Continuous insulation
R19	+ R10
R22	
R24	

Airtightness: possible substitutions to wall insulation

R22 + R7.5ci ➡ R19 + R5ci

R22 + R10ci ➡ R19 + R7.5ci

R24 + R10ci ➡ R22 + R7.5ci

+ R7.5ci ➡ + R5ci

+ R10ci ➡ + R7.5ci

BASEMENT WALL

Cavity insulation	Continuous insulation
R12	+ R5

Cavity insulation	Continuous insulation
R20	+ R8

Continuous insulation
R20

Cavity insulation	Continuous insulation
R12	+ R10
R20	

Cavity insulation	Continuous insulation
R20	+ R12

Airtightness: possible substitutions to basement insulation

R20 + R12ci

R20 + R10ci

R20ci

➡ R15ci or
R12 + R5ci

BELOW GRADE SLAB (> 600mm/2ft)

Continuous insulation
R5
R7.5
R10

SLAB ON GRADE (≤ 600mm/2ft)

Continuous insulation
R10

HEATED SLAB

Continuous insulation
R10

Airtightness: possible substitutions to slab insulation

Slab (> 600mm/2ft)

R5 or R10 ➡ R0

Heated slab:

R10 ➡ R5

* For compliance packages and airtightness targets details, refer to the OBC 2017 or visit our website

ACHIEVE THE AIRTIGHTNESS

Reduce your construction cost

Choose **ISOCLAD** or another Isofoam product to help you reach easily the airtightness targets.

- Ideal panel size
- Reduced joints

- Shiplapped 4 sides
- Integrated air or vapour barrier

- Easy to install
- Economical solutions

A COMPLETE LINE OF EFFICIENT INSULATION PRODUCTS

You Tube

WATCH OUR VIDEOS ONLINE

ABOVE GROUND WALL INSULATION

INTERIOR
ISO R PLUS®
premium

ABOVE GROUND WALL INSULATION

EXTERIOR
ISOCCLAD®
ISOBRACE OSB®
ISO SHIELD NVB®
premium



UNDER SLAB INSULATION

IFLEXFOAM®

UNDER SLAB INSULATION

ISORAD V2®

FOUNDATION INSULATION

INTERIOR
ISOFOIL®

VERSATILE INSULATION

ISOLOFOAM® HD 160
XHD 200 | 300 | 400

A PARTNER OF CHOICE

EXPERTS AT FINDING SOLUTIONS

Isolofoam Group is renowned for its innovative and responsible thermal insulation solutions. The company has been investing in expanded polystyrene product research and development for more than 40 years.

Its insulation solutions are tried and tested and meet the highest insulation requirements in the industry.

Isolofoam Group is proud to offer construction and renovation specialists, dealers and consumers a complete line of products that stands out in the market.



DISCLAIMER The procedures presented in this document are intended as a guideline only, to provide a basic understanding of the concepts involved in the proper and effective installation of Isolofoam Group's product. It remains the responsibility of the installer and/or builder to ensure that all work performed conforms to applicable building code and labour safety regulations governing the construction. While care has been taken to ensure accuracy, and convey proper construction practices, Isolofoam Group does not assume responsibility for consequential loss, errors or oversights resulting from the information contained herein. Our liability is expressly limited to replacement of defective goods from Isolofoam Group.