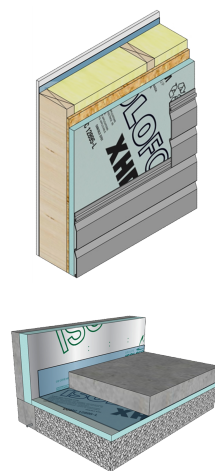




# ISOLOFOAM HD 160

RIGID INSULATION PANEL FOR MULTIPLE APPLICATIONS.

- Superior insulation
- High compressive strength
- Durability
- Water, moisture, mold and insect resistant
- Retains insulating properties over time, even in contact with the ground
- Easy to saw, cut or score
- Environmentally friendly



### Description

**ISOLOFOAM HD 160** is a rigid insulation panel of high density expanded polystyrene.

### Applications

**Versatile insulation panel ideal for interior and exterior uses**

**ISOLOFOAM HD 160** is suitable for various applications such as:

- Interior and exterior insulation for walls and foundations
- On and under concrete slab insulation
- Ceiling insulation
- Cathedral roof insulation
- Ideal for residential, commercial, industrial and institutional applications, both new constructions and retrofits.

### Codes & Compliances

**ISOLOFOAM HD 160** complies with these standards and requirements :

- **USA/ ASTM C-578**, Type VIII
- Product certified for low chemical emissions: **GREENGUARD - UL 2818** and **GREENGUARD Gold - UL 2818**.


### Environmental Data

Composed of 98% air and 2% of plastics, **ISOLOFOAM HD 160** presents lower risks of toxicity than conventional building materials and does not and has never contained HCFCs or HFCs that damage the ozone layer. **ISOLOFOAM HD 160** is certified and meets low chemical emissions standards for **UL-GREENGUARD** and **UL-GREENGUARD Gold** Certifications (UL.COM/GG).

### Fire Protection

**ISOLOFOAM HD 160** Insulation is combustible; protect from high heat sources. A protective barrier or thermal barrier may be required. Refer to your local building codes for appropriate protection and thermal barrier requirements.

### Physical Properties

DIMENSIONS	THICKNESSES	R VALUE	
24" x 96" or 48" x 96" Shiplapped 4 sides 	1 1/4"	5.0	
	1 7/8"	7.5	
	2 1/2"	10.0	
PROPERTIES	METHODS	UNITS	ISOLOFOAM HD 160
THERMAL RESISTANCE	ASTM C-518	°F•ft²•h/Btu/ in at 75°F mean temp.	See dimensions table above
COMPRESSIVE STRENGTH MIN.	ASTM D-1621	Psi (kPa)	16 (110)
FLEXURAL STRENGTH MIN.	ASTM C-203	Psi (kPa)	35 (240)
WATER VAPOR TRANSMISSION MAX.	ASTM E-96	perms (ng/ Pa•s•m²)	3.5 (200)
WATER ABSORPTION MAX.	ASTM C-272	%	3
DIMENSIONAL STABILITY	ASTM D-2126	%	2
FLAME SPREAD	ASTM E-84	-	25
SMOKE DEVELOPED MAX.	ASTM E-84	-	450

Find the most current product and compliance information at [us.isolofoam.com](http://us.isolofoam.com)

For more information on specific building product recommendations and installation guidelines, contact your **Isolofoam Group** representative.

Isolofoam believes the information and recommendations herein to be accurate and reliable. Because use conditions and applicable laws may differ from one location to another and may change with time, Customer is responsible for determining whether products and the information in this document are appropriate for Customer's use and for ensuring that Customer's workplace and disposal practices are in compliance with applicable laws and other government enactments. No express warranties are given. All implied warranties including those of merchantability and fitness for a particular purpose are expressly excluded.