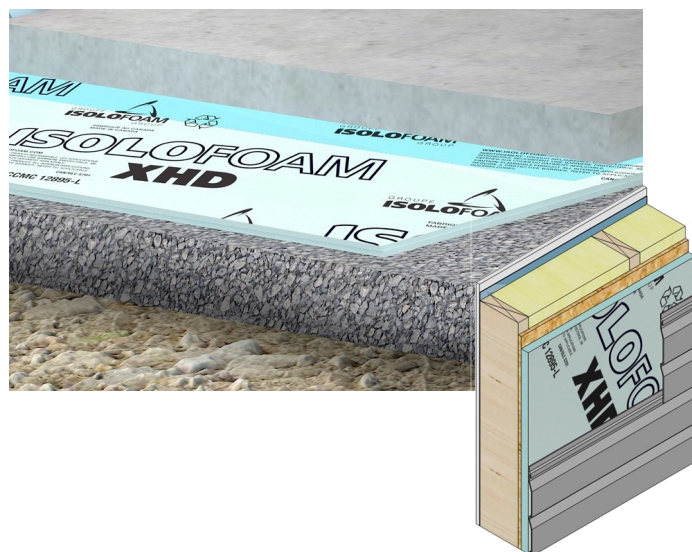




ISOLOFOAM® XHD 250

HIGH DENSITY RIGID INSULATION PANEL FOR MULTIPLE APPLICATIONS

- High compressive strength
- Resistant and stable
- Superior insulation
- Retains insulating properties over time, even when in contact with the ground
- Durable
- Water, moisture and mold resistant
- Easy to saw, cut or score
- Environmentally friendly



Description

ISOLOFOAM XHD 250 is a rigid high-density expanded polystyrene insulation designed for applications where standards require high compressive strength.

Frequent Applications

Residential, Commercial or Industrial Concrete Slabs

- Guarantees high performance insulation under the concrete slab where greater compressive strength is needed.

Exterior Foundations

- Ensures foundation walls are insulated from the outside in applications even where heavy traffic is expected in proximity.

Terraces and Parking Areas

- Maintains stability under freeze-thaw conditions.

Recreation Centers and Skating Rinks

- Reduces frost penetration in the platform.
- Lowers the cooling capacity requirements of the skating surface.
- Cuts in energy costs for continuous skating rink usage.
- Decreases ice making and de-icing time for multi-uses

Codes & Compliances

ISOLOFOAM XHD 250 complies with these standards and requirements:

- USA/ ASTM C-578, Type IX
- Product certified for low chemical emissions: **GREENGUARD-UL 2818** and **GREENGUARD Gold-UL 2818**.


Environmental Data

Composed of 95-98% air and 2-5% of plastics, **ISOLOFOAM XHD 250** presents risks of toxicity lower than conventional building materials and does not and has never contained HCFCs or HFCs that damage the ozone layer. **ISOLOFOAM XHD 250** is certified and meets the third-party chemical emissions standards for **UL-GREENGUARD** and **UL-GREENGUARD Gold** Certifications (UL.COM/GG).

Fire Protection

ISOLOFOAM XHD 250 insulation is combustible; protect from high heat sources. A protective barrier or thermal barrier may be required. Refer to your local building codes for appropriate protection and thermal barrier requirements.

Physical Properties

DIMENSIONS	THICKNESSES	R VALUE
24" x 96" or 48" x 96" Shiplapped 4 sides	1.2"	5
	1.8"	7.55
Also available: other thicknesses, 48" x 108", square edge or shiplapped 2 or 4 sides.	2.4"	10

PROPERTIES	METHODS	UNITS	XHD 250
THERMAL RESISTANCE	ASTM C-518	°F•ft²•h/Btu/in at 75°F mean temp.	See dimensions table above
COMPRESSIVE STRENGTH MIN.	ASTM D-1621	Psi (kPa)	25 (173)
FLEXURAL STRENGTH MIN.	ASTM C-203	Psi (kPa)	50 (345)
WATER VAPOR TRANSMISSION MAX.	ASTM E-96	perms (ng/Pa•s•m²)	2.5 (143)
WATER ABSORPTION MAX.	ASTM C-272	%	2
DIMENSIONAL STABILITY	ASTM D-2126	%	2
FLAME SPREAD	ASTM E-84	-	25
SMOKE DEVELOPED MAX.	ASTM E-84	-	450

Find the most current product and compliance information at us.isolofoam.com

For more information on specific building product recommendations and installation guidelines, contact your **Isolofoam Group** representative.