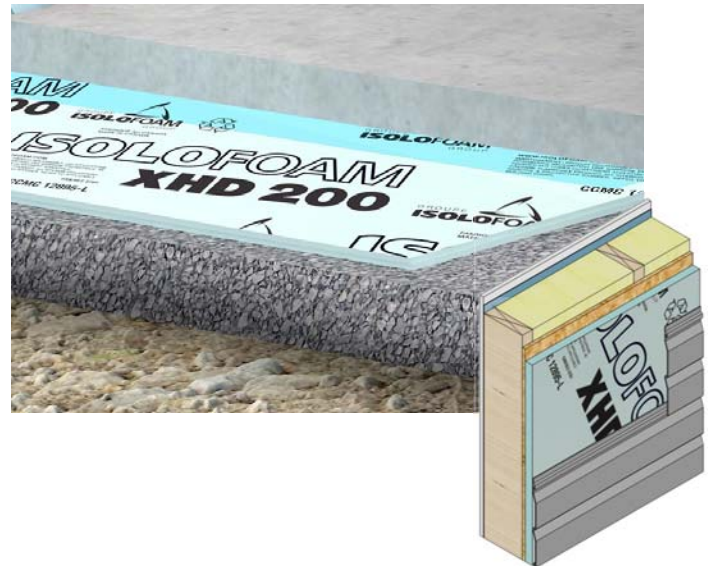




ISOLOFOAM XHD 200

HIGH DENSITY RIGID INSULATION PANEL FOR MULTIPLE APPLICATIONS

- High compressive strength
- Resistant and stable
- Superior insulation
- Retains insulating properties over time, even in contact with the ground
- Durability
- Water, moisture, mold and insect resistant
- Easy to saw, cut or score
- Environmentally friendly



Description

ISOLOFOAM XHD 200 is a rigid high-density expanded polystyrene insulation designed for applications where standards require high compressive strength.

Applications

Residential, Commercial or Industrial Concrete Slabs

- Guarantees high performance insulation under the concrete slab where greater compressive strength is needed.

Exterior Foundations

- Ensures foundation walls are insulated from the outside in applications where heavy traffic is expected in proximity.

Terraces and Parking Areas

- Maintains stability under freeze-thaw conditions.

Recreation Centers and Skating Rinks

- Reduces frost penetration in the platform.
- Lowers the cooling capacity requirements of the skating surface.
- Cuts in energy costs for continuous skating rink usage.
- Decreases ice making and de-icing time for multi-uses

Codes & Compliances

ISOLOFOAM XHD 200 complies with these standards and requirements:

- USA/ ASTM C-578, Type II
- Product certified for low chemical emissions: **GREENGUARD-UL 2818** and **GREENGUARD Gold-UL 2818**.

Environmental Data

Composed of 95-98% air and 2-5% of plastics, ISOLOFOAM XHD 200 presents risks of toxicity lower than conventional building materials and does not and has never contained HCFCs or HFCs that damage the ozone layer. ISOLOFOAM XHD 200 is certified and meets the third-party chemical emissions standards for **UL-GREENGUARD** and **UL-GREENGUARD Gold** Certifications (UL.COM/GG).

Fire Protection

ISOLOFOAM XHD 200 Insulation is combustible; protect from high heat sources. A protective barrier or thermal barrier may be required. Refer to your local building codes for appropriate protection and thermal barrier requirements.

Physical Properties

DIMENSIONS	THICKNESSES	R VALUE
24" x 96" or 48" x 96" Shiplapped 4 sides	1.2"	5
	1.8"	7.55
	2.4"	10



PROPERTIES	METHODS	UNITS	XHD 200
THERMAL RESISTANCE	ASTM C-518	°F·ft ² ·h/Btu/in at 75°F mean temp.	See dimensions table above
COMPRESSIVE STRENGTH MIN.	ASTM D-1621	Psi (kPa)	20 (140)
FLEXURAL STRENGTH MIN.	ASTM C-203	Psi (kPa)	39 (270)
WATER VAPOR TRANSMISSION MAX.	ASTM E-96	perms (ng/Pa·s·m ²)	3.5 (200)
WATER ABSORPTION MAX.	ASTM C-272	%	3
DIMENSIONAL STABILITY	ASTM D-2126	%	2
FLAME SPREAD	ASTM E-84	-	25
SMOKE DEVELOPED MAX.	ASTM E-84	-	450

Find the most current product and compliance information at us.isolofoam.com

For more information on specific building product recommendations and installation guidelines, contact your **Isolofoam Group** representative.

Isolofoam believes the information and recommendations herein to be accurate and reliable. Because use conditions and applicable laws may differ from one location to another and may change with time, Customer is responsible for determining whether products and the information in this document are appropriate for Customer's use and for ensuring that Customer's workplace and disposal practices are in compliance with applicable laws and other government enactments. No express warranties are given. All implied warranties including those of merchantability and fitness for a particular purpose are expressly excluded.